

Poręcz

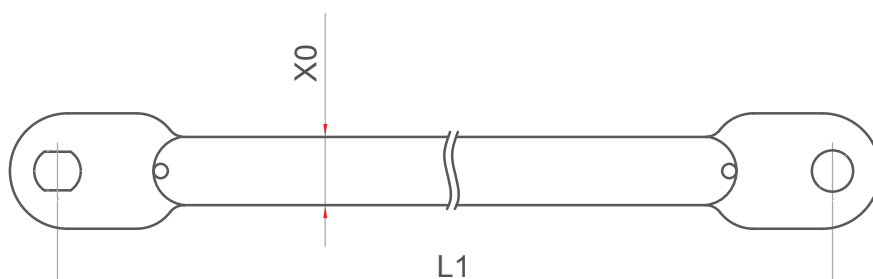


Tabela techniczna

symbol	L 1	X0	Waga:
BA 150	1500	38x1,8 (33,7x2,6)	2,9 kg
BA 200	2000	38x1,8 (33,7x2,6)	4 kg
BA 250	2500	38x1,8 (33,7x2,6)	5,1 kg
BA 300	3000	38x2,3 (33,7x4,0)	6,2 kg

